



The Home  
for Little  
Wanderers



The Home  
for Little  
Wanderers  
Strong families. Strong life.



Family  
Resource Center  
Boston-Suffolk County

(617) 469-8501

## Locations

### Roslindale (Main Site)

780 American Legion Highway  
Roslindale, MA 02131

### Family Enrichment Site

#### @ Up Academy Dorchester (Satellite Site)

35 Westville Street  
Dorchester, MA 02124

*Walk-ins welcome. Please call for 617-469-8501 or visit [www.thehome.org/frc](http://www.thehome.org/frc) for updated hours and locations or to make an appointment.*

**The Home for Little Wanderers** provides a seamless continuum of vital programs and services for every stage of child and family development. For more than 200 years we've earned a reputation for doing whatever it takes to strengthen vulnerable families and keep children safe in their own communities, even when they don't have family support.

We provide services in eight different languages and in multiple venues throughout Eastern Massachusetts, including schools, clinics and homes. Our dedicated staff includes more than 130 licensed clinicians and 180 direct care counselors, five psychiatrists, four psychologists, and 24 teachers.

The Home's mission is to ensure the healthy behavioral, emotional, social and educational development and physical well-being of children and families living in at-risk circumstances.

To learn more about The Home, visit:  
[www.thehome.org](http://www.thehome.org).



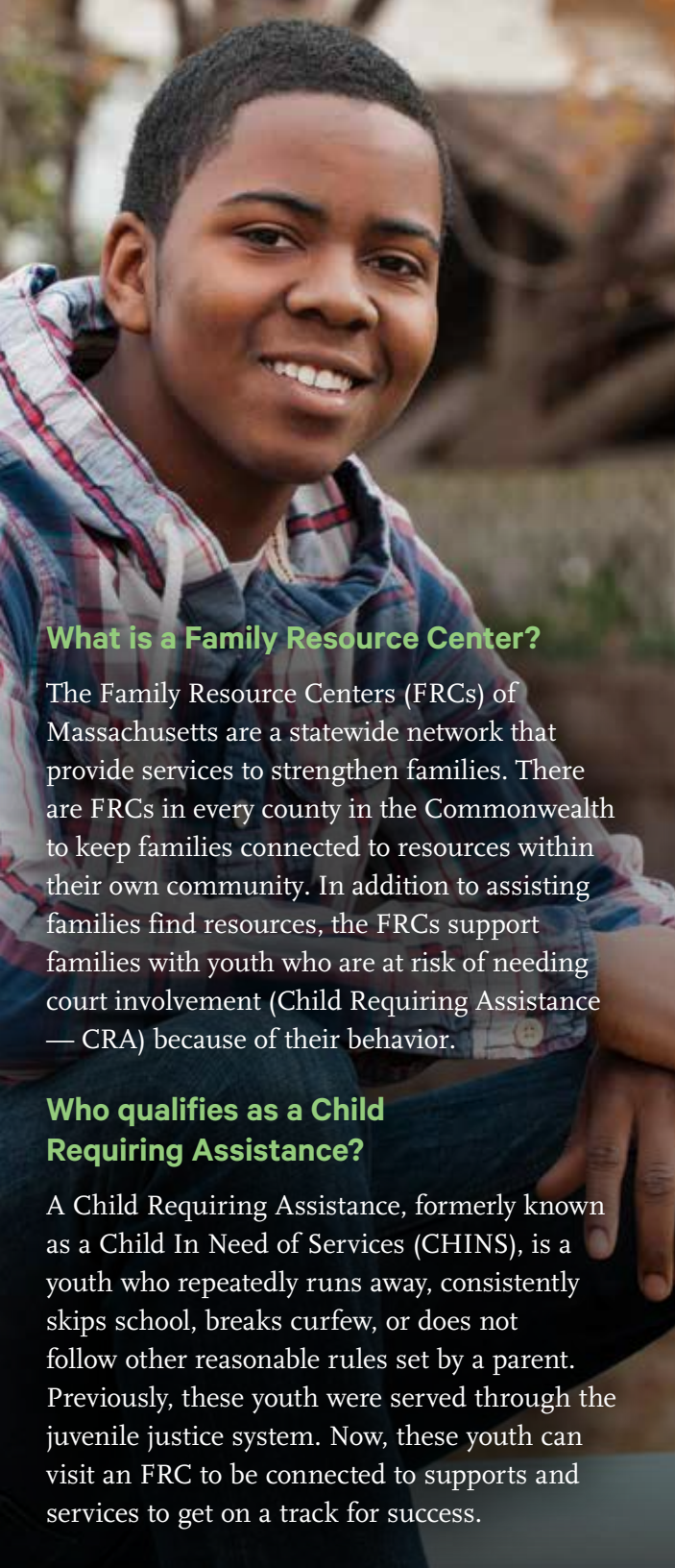
**Strengthening our children  
by giving their families the  
tools they need to succeed.**

## The Home For Little Wanderers Family Resource Centers

(617) 469-8501 | [FRC@thehome.org](mailto:FRC@thehome.org)  
[www.thehome.org/frc](http://www.thehome.org/frc) | [www.frcma.org](http://www.frcma.org)



The Home for Little  
Wanderers  
Strong families. Strong life.



### What is a Family Resource Center?

The Family Resource Centers (FRCs) of Massachusetts are a statewide network that provide services to strengthen families. There are FRCs in every county in the Commonwealth to keep families connected to resources within their own community. In addition to assisting families find resources, the FRCs support families with youth who are at risk of needing court involvement (Child Requiring Assistance — CRA) because of their behavior.

### Who qualifies as a Child Requiring Assistance?

A Child Requiring Assistance, formerly known as a Child In Need of Services (CHINS), is a youth who repeatedly runs away, consistently skips school, breaks curfew, or does not follow other reasonable rules set by a parent. Previously, these youth were served through the juvenile justice system. Now, these youth can visit an FRC to be connected to supports and services to get on a track for success.

### How Can We Help?

Families come to the FRC for many reasons. The goal of the FRC is to connect those looking for help to the appropriate services whether within the FRC itself or other places in the community. Staff at the FRC can help families find resources regarding:

- Housing support
- Utility assistance
- Legal help
- Summer camps, sport leagues and more

Children and families who need additional supports or are at risk of court involvement can be assessed by FRC clinicians and develop a Family Support Plan to address the child's needs.

The FRC hosts and facilitates groups and events to strengthen families by giving them the tools they need through education and engagement.

Visit [thehome.org/frc](https://www.thehome.org/frc) to browse and register for our upcoming events!

### Who Do We Help?

The Boston-Suffolk County FRC serves *all* residents of the Commonwealth. Our primary service area includes:

- All neighborhoods of Boston
- Chelsea
- Winthrop
- Revere



### What Services Are Offered?

The FRC offers an array of services through its experienced and knowledgeable staff.

The **School Liaison** will help families with issues pertaining to:

- Truancy
- Absenteeism
- Special Education
- Behavioral issues

The **Family Support Workers** are knowledgeable on resources in the community and how to locate opportunities for families.

**Family Partners** help families navigate the child-serving system and use their lived experience as caregivers to partner with other caregivers to help achieve their goals.

The FRC facilitates groups and classes for families such as evidence-based parent groups and anger management classes.